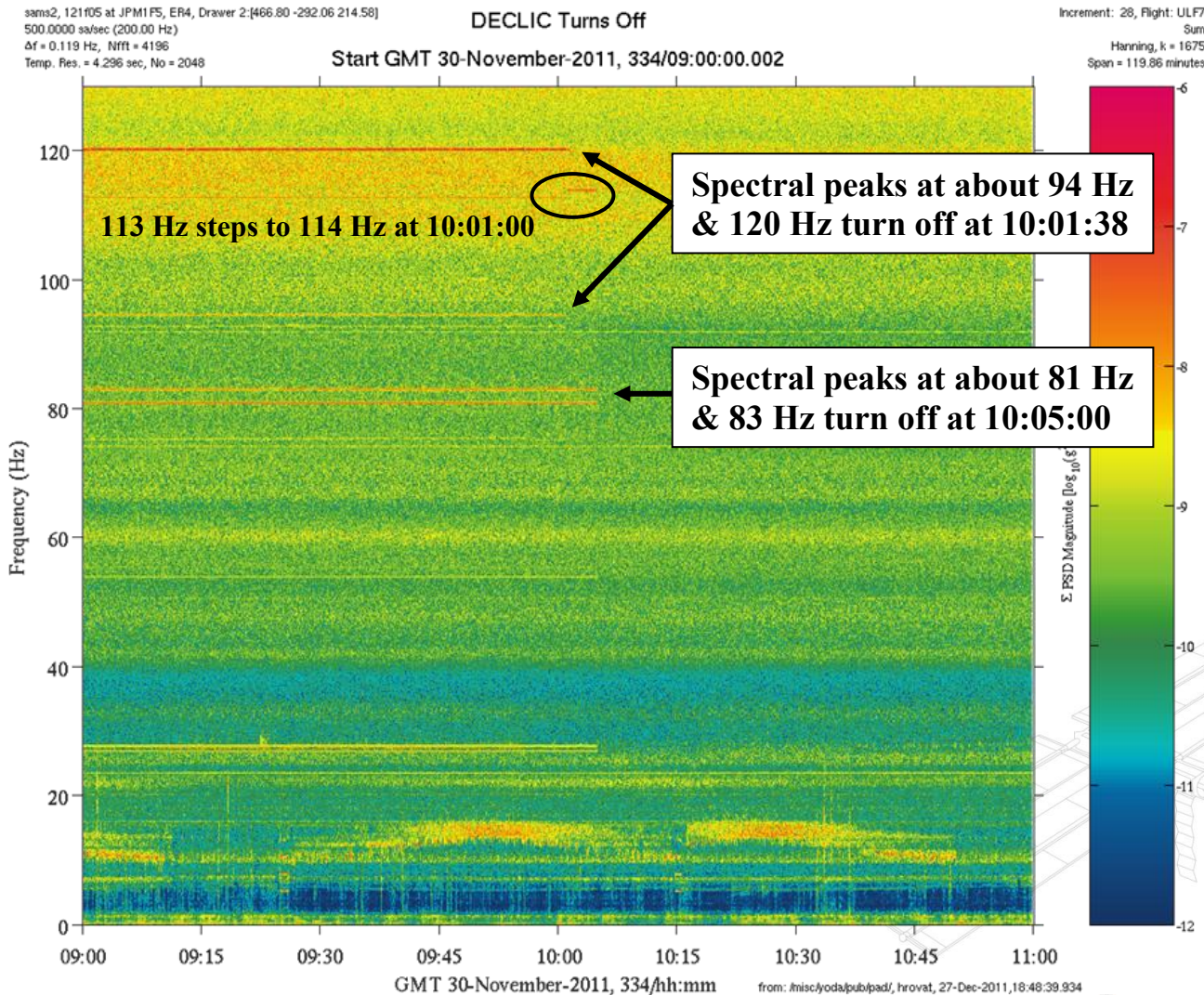


Dispositif d'Etude de la Croissance et des Liquides Critiques (DECLIC) Qualify



Description	
Sensor	121f05 500 sa/sec (200 Hz)
Location	JPM1F5, ER4, Drawer 2
Orientation	Space Station Analysis (SSA)
Increment	30
Plot Type	spectrogram

Notes:

- CNES-sponsored instrument called DECLIC (Dispositif d'Etude de la Croissance et des Liquides Critiques) is a device for the study of critical liquids. It has a range of optical equipment to study transparent media.
- Note from voice loops: "DECLIC turned off at [approx.] GMT 30-Nov-2011 10:04:45".
- Sequence of narrowband spectral peaks transitions as DECLIC turned off was like so:

GMT hh:mm:ss	Note
10:01:00	113 Hz steps to 114 Hz
10:01:38	94 Hz & 120 Hz turn off
10:04:58	114 Hz turn off
10:05:00	81 Hz & 83 Hz turn off

- No particular equipment has yet been identified for these spectral peaks.



Microgravity Science Division



Glenn Research Center

Regime:	Vibratory
Category:	Experiment Equipment
Source:	DECLIC

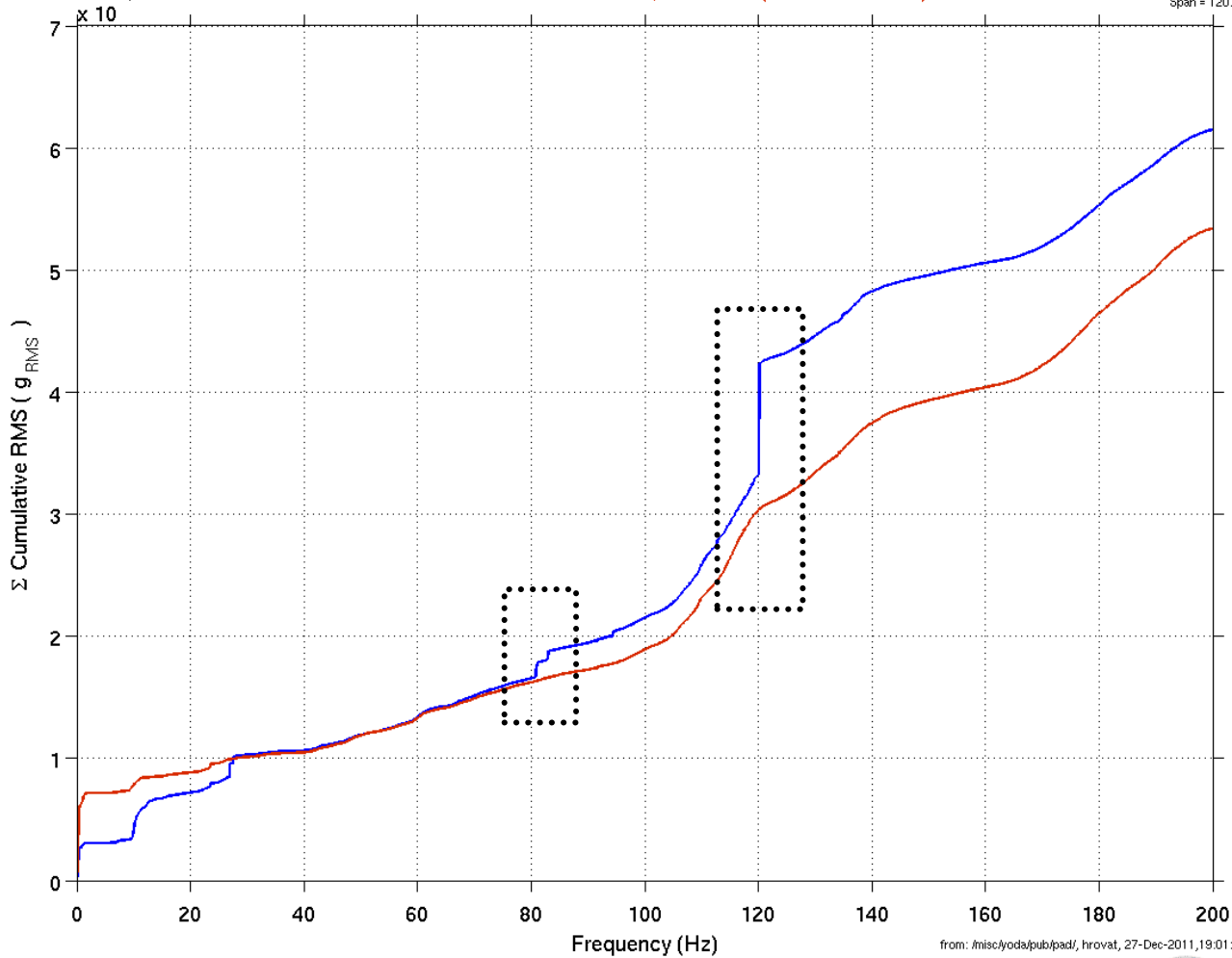
Dispositif d'Etude de la Croissance et des LIquides Critiques (DECLIC) Quantify

sams2, 121f05 at JPM1F5, ER4, Drawer 2:[466.80 -292.06 214.58]
500.0000 sa/sec (200.00 Hz)
 $\Delta f = 0.031$ Hz, Nfft = 16384

Start GMT 30-November-2011, 334/09:30 (DECLIC is ON)

Start GMT 30-November-2011, 334/10:50 (DECLIC is OFF)

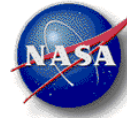
Increment: 28, Flight: ULF7
Sum
Hanning, k = 4
Span = 120.00 sec.



from: /misc/yoda/pub/pad/, hrovat, 27-Dec-2011, 19:01:49.904



Microgravity Science Division



Glenn Research Center

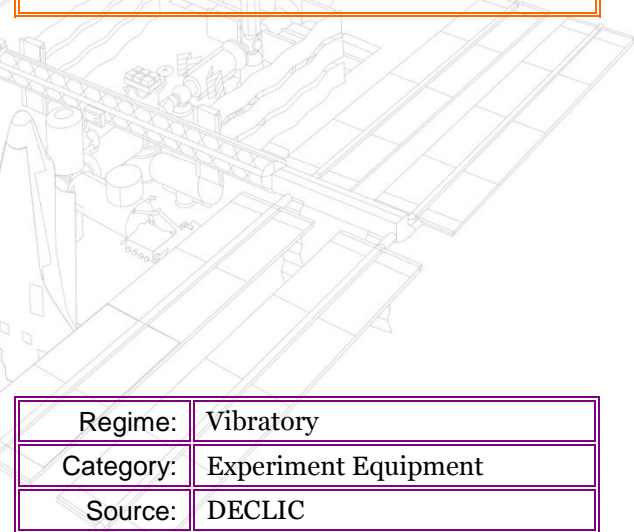
PIMS ISS Acceleration Handbook
Date last modified 12/28/11

Description	
Sensor	121f05 500 sa/sec (200 Hz)
Location	JPM1F5, ER4, Drawer 2
Orientation	Space Station Analysis (SSA)
Increment	30
Plot Type	cumulative RMS

Notes:

- The spectral peak at 120 Hz was the primary vibratory contributor while DECLIC was on giving rise to the $\sim 100 \mu g_{RMS}$ step above the "off" condition at that frequency. The other narrowband contributors were analyzed also to give the following table:

Frequency (Hz)	μg_{RMS}
81	11
83	6
114	10
120	92



Regime:	Vibratory
Category:	Experiment Equipment
Source:	DECLIC